

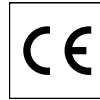
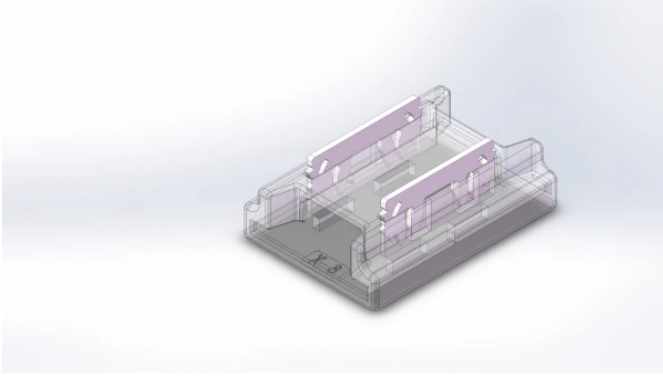
LED line PRIME

Code: 220386

EAN: 5905378220386

**Connector for LED strips Fast Connector
3gen. straight SMD/COB 2pin 8mm 6A
PCB-PCB PRIME (10 pcs.)**

Easy and quick installation of LED strips without the use of tools – 3rd generation connectors allow for instant and safe connections, saving time and installation costs.



Technical data

| Parameter | Value |
|----------------------|--------------|
| Warranty | 5 |
| Voltage | • 12-24 V DC |
| IP protection rating | IP20 |
| Connector type | I |

| Parameter | Value |
|----------------------------|---------|
| Maximum width of LED strip | 8 mm |
| LED type | SMD/COB |
| For indoor use | Inside |
| Height | 4,2 mm |

LED line PRIME

Code: 220386

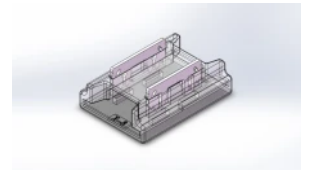
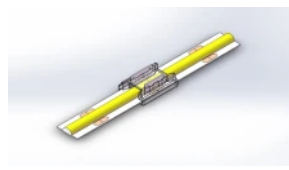
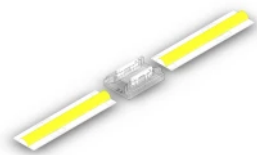
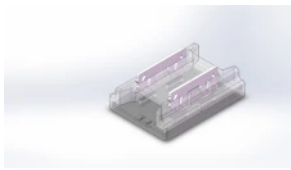
EAN: 5905378220386

**Connector for LED strips Fast Connector
3gen. straight SMD/COB 2pin 8mm 6A
PCB-PCB PRIME (10 pcs.)**

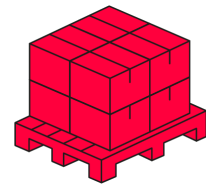
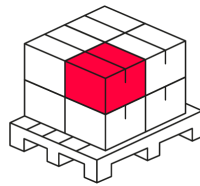
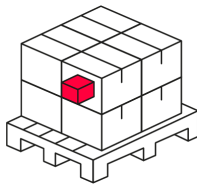
Technical drawing

Light distribution

Additional product photos



Logistics data



Single packaging

| | |
|--------|---------|
| Width | 10,5 cm |
| Height | 2 cm |
| Length | 15 cm |
| Weight | 0,38 kg |

Bulk packaging

| | |
|----------|--------|
| Quantity | 3000 |
| Width | 36 cm |
| Height | 43 cm |
| Length | 25 cm |
| Weight | 8,6 kg |

Europallet

LED line PRIME

Code: 220386

EAN: 5905378220386

**Connector for LED strips Fast Connector
3gen. straight SMD/COB 2pin 8mm 6A
PCB-PCB PRIME (10 pcs.)**

Example application