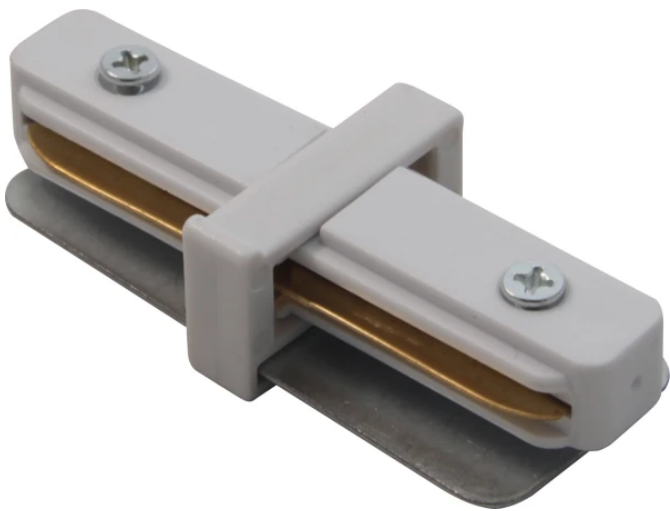


Other

Code: 2034627

EAN:

Connector for 1-phase track light rail straight (white)



The 1-phase white mat rail connector is a modern accessory that provides a reliable electrical connection. Powered by 100-240V AC at 50/60Hz, it supports single-phase installations with two wires. Made of metal and ABS, it has copper conductors to guarantee high quality of current transmission. It is characterized by IP20 leak class and operating temperature from -25°C to +60°C.

Technical data

Parameter	Value
IP protection rating	IP20
Length	80
Width	34

Parameter	Value
Height	20
Material (housing)	ABS

Other

Code: 2034627

EAN:

Connector for 1-phase track light rail
straight (white)

Technical drawing

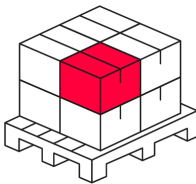
Light distribution

Additional product photos

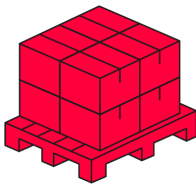
Logistics data



Single packaging



Bulk packaging



Europallet

Quantity

Other

Code: 2034627

EAN:

**Connector for 1-phase track light rail
straight (white)**

Example application