

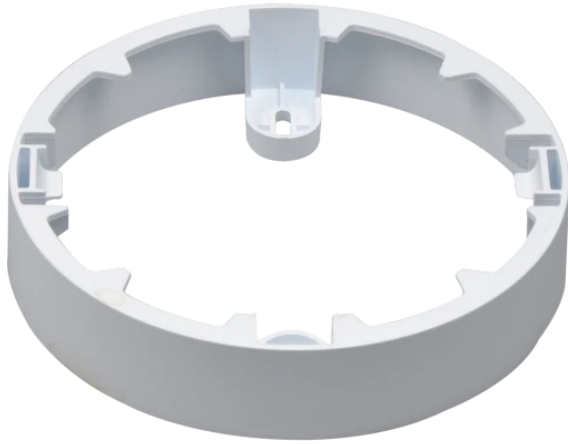
LED line LITE

Code: 200920-II

EAN: 5905378224957

Downlight MOLLY Round frame for surface mounting 12W white LITE

New



The surface-mounted frame LED line is a functional adapter that quickly changes the purpose of Slim recessed panels, allowing them to be mounted directly on the ceiling or wall. The perfectly matched construction ensures an aesthetic finish and a cohesive look for the entire installation, while maintaining the compact dimensions of the fixture. Thanks to the simple mounting system, it is an indispensable solution wherever suspended ceilings cannot be used.



Technical data

| Parameter | Value |
|----------------|--------|
| Warranty | 3 |
| For indoor use | Inside |
| Height | 32 mm |

| Parameter | Value |
|--------------------|---------------|
| Fixture's diameter | 145 mm |
| Weight | 0,045 kg |
| Material (housing) | Polycarbonate |

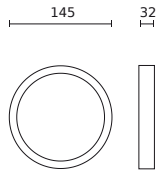
LED line LITE

Code: 200920-II

EAN: 5905378224957

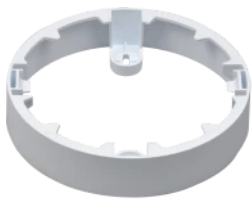
Downlight MOLLY Round frame for surface mounting 12W white LITE

Technical drawing



Light distribution

Additional product photos



Logistics data



Single packaging

| | |
|--------|----------|
| Width | 150 mm |
| Height | 42 mm |
| Length | 150 mm |
| Weight | 0,081 kg |



Bulk packaging

| | |
|----------|--------|
| Quantity | 60 |
| Width | 39 cm |
| Height | 32 cm |
| Length | 47 cm |
| Weight | 3,2 kg |



Europallet

| | |
|---------------|-------|
| Quantity | 960 |
| Height | 1,6 m |
| Bulk quantity | 16 |
| Weight | 80 kg |

LED line LITE

Code: 200920-II

EAN: 5905378224957

**Downlight MOLLY Round frame for
surface mounting 12W white LITE**

Example application