

LED line LITE

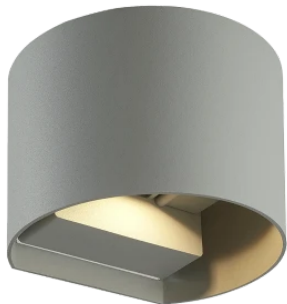
Code: 475565

EAN: 5907777475565

LED line LITE Outdoor wall mounted luminaire LED 2x3W 4000K IP54 gray CILINDER



The CILINDER outdoor wall from LED line LITE is a modern lighting fittings designed for use on facades. With 2x3W power and 4000K color temperature, it provides neutral, energy-efficient light with a luminous flux of 450 lumens. IP54 protection class guarantees resistance to atmospheric conditions.



Technical data

Parameter	Value
Energy efficiency class 2019/2015	G
Warranty	3
Power	• 6 W
Voltage	• 100-260 V AC
Correlated colour temperature	• 4000 K
Colour of the light	White
Colour rendering index Ra	80
IP protection rating	IP54
IK protection rating	05
IEC protection class	II
The lumen maintenance factor	96
Lifetime L70B50	30 000 h
Survival factor	0.9

Parameter	Value
Colour consistency in McAdam ellipses	≤6
Frequency of the supply voltage	50/60Hz
Beam angle	0-120
LED type	2835 SMD
LED quantity	14
Power Factor	0,5
Number of on/off cycles	20000
Ambient temperature suitable for operation	-20÷40
Length	13,5
Width	11,5
Height	10
Material (housing)	Aluminium
Material (cover)	glass

LED line LITE

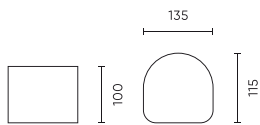
Code: 475565

EAN: 5907777475565

LED line LITE Outdoor wall mounted luminaire LED 2x3W 4000K IP54 gray CILINDER

Technical drawing

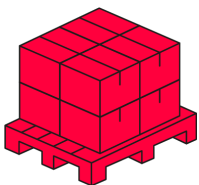
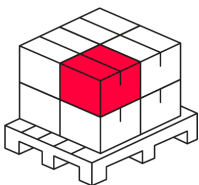
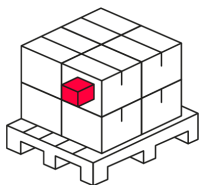
Light distribution



Additional product photos



Logistics data



Single packaging

Quantity	1
Width	110 mm
Height	110 mm
Length	110 mm
Weight	0,35 kg

Bulk packaging

Quantity	40
Width	460 mm
Height	310 mm
Length	640 mm
Volume	0,091 m3
Weight	14,35 kg
Comments	

Europallet

Quantity	840
Height	1840 mm
Quantity in layer	120
Number of layers	4
Bulk quantity	480
Weight	172,2 kg

LED line LITE

Code: 475565

EAN: 5907777475565

**LED line LITE Outdoor wall mounted
luminaire LED 2x3W 4000K IP54 gray
CILINDER**

Example application