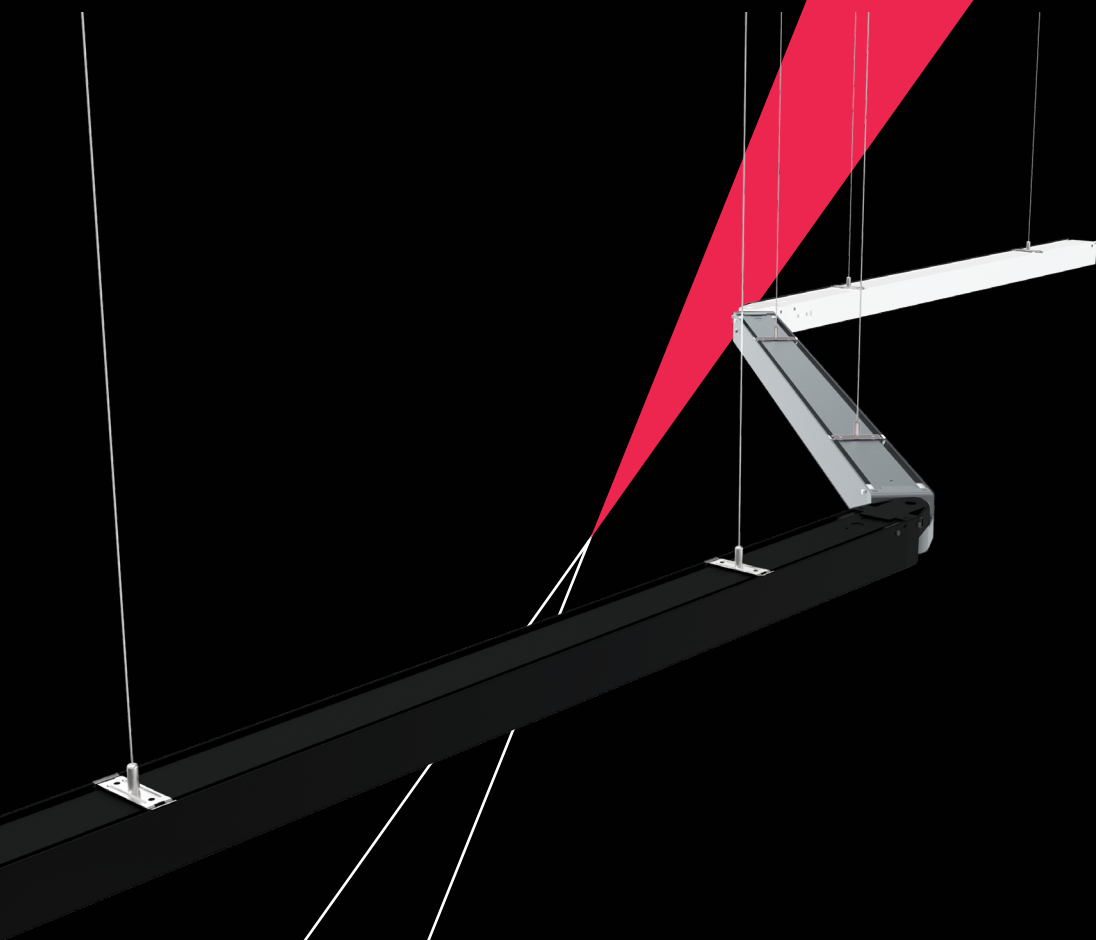


LED line  
PRIME



**FUSION**  
**Linear Luminaire**



## FUSION linear luminaire

### Combine, shape, illuminate as you wish.

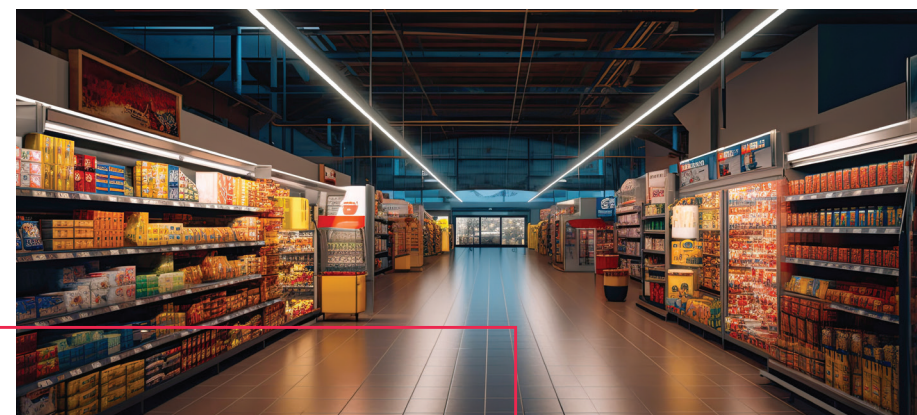
Provide your spaces with uniform, homogeneous and perfectly diffused light with the FUSION linear luminaire. This versatile luminaire is ideal for illuminating different types of room.

**Creativity without limits.** The FUSION linear luminaire series includes products with a power range of 20 to 60W and a colour temperature of 4000K. The efficiency of the luminaires is an impressive 130 lm/W. You can adjust the light distribution angles with the lenses, adapting them to your preferences and even eliminating the 'glare' effect with the UGR shield.

**Tailored to your needs,** thanks to the different wattage variants and different lengths, the luminaires can be perfectly adapted to any interior. Their universal shape makes them easy to mount on slings or surface-mounted.

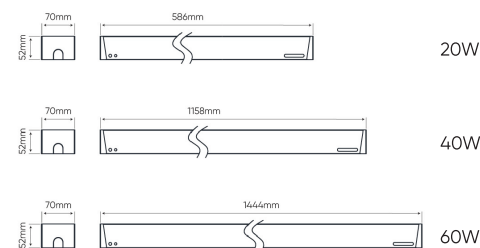
**Seamless linking,** one of the greatest advantages of the linear luminaires in the FUSION series is the possibility of virtually tool-free linking of the luminaires using the built-in connectors that are standard equipment. This makes it possible to create uniform, continuous lines of light and to build diverse lighting systems of any shape.

**Durable and efficient:** The luminaire body is made of robust aluminium, which not only ensures a long service life, but also efficiently dissipates heat. This solution guarantees not only energy efficiency but also safety in use.

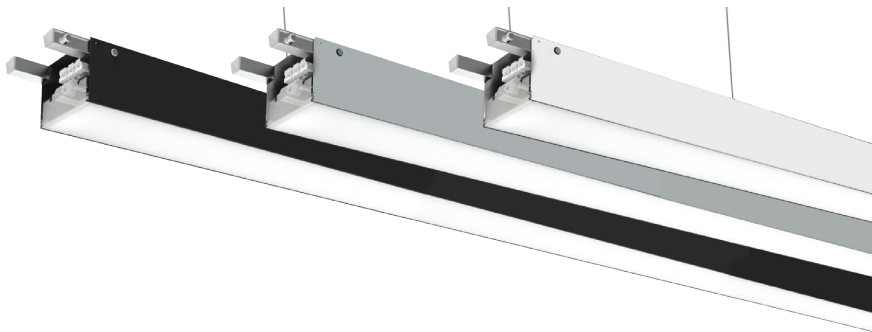


### Technical specifications:

- Power: 20W/40W/60W,
- luminous efficacy: 130 lm/W,
- interchangeable lenses: P18/ LR40/ PC120/ 30x60/ 60x90 /90x110 / UGR cover
- colour temperature: neutral 4000K,
- mechanical resistance class: IK08,
- ingress protection class: IP20,
- dimmable function: YES,
- very long life: defined by the L70B50 parameter of 50,000 hours,
- available colors: black (RAL 9004), white (RAL 9016) and gray (RAL 9006),
- 5-year warranty.



Discover the potential  
of FUSION linear  
luminaires and create  
lighting that meets your  
expectations.

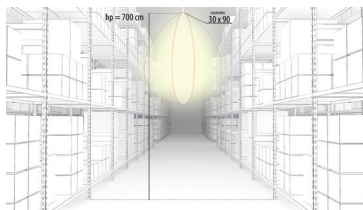
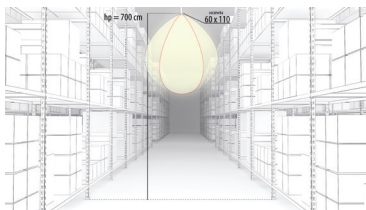


## Application:

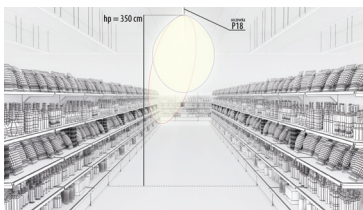
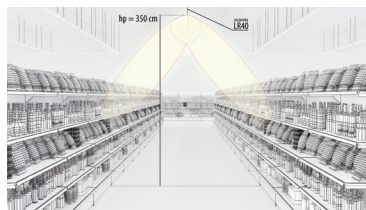
- Offices and spaces for commercial use: shopping centres, exhibition halls, hotels, restaurants and workplaces – FUSION linear luminaires will provide even lighting for any large space.
- Meeting and lecture theatres: create ideal lighting conditions for meeting participants, speakers and suitable presentation areas for teaching materials.



- Warehouses and production halls: create adequate lighting in working areas and optimise energy consumption thanks to Merrytek sensors and Daylight Harvesting technology in FUSION luminaires.



- Shops and shopping malls: aesthetically and evenly illuminating selected areas, highlighting products and architectural elements has never been easier.



**LED line**

T. +48 29 764 77 00  
E. kontakt@ledline.pl  
www.ledline.eu

LEDIN Group Sp. z o.o.  
Dębowa 1  
07-410 Tobolice  
NIP. 7582278888  
REGON. 141680103

